

HENRY AIRTOOLS

AMERICAN MADE INDUSTRIAL TOOLS

MODELS 3922 AGHLS

General Safety and Maintenance Manual

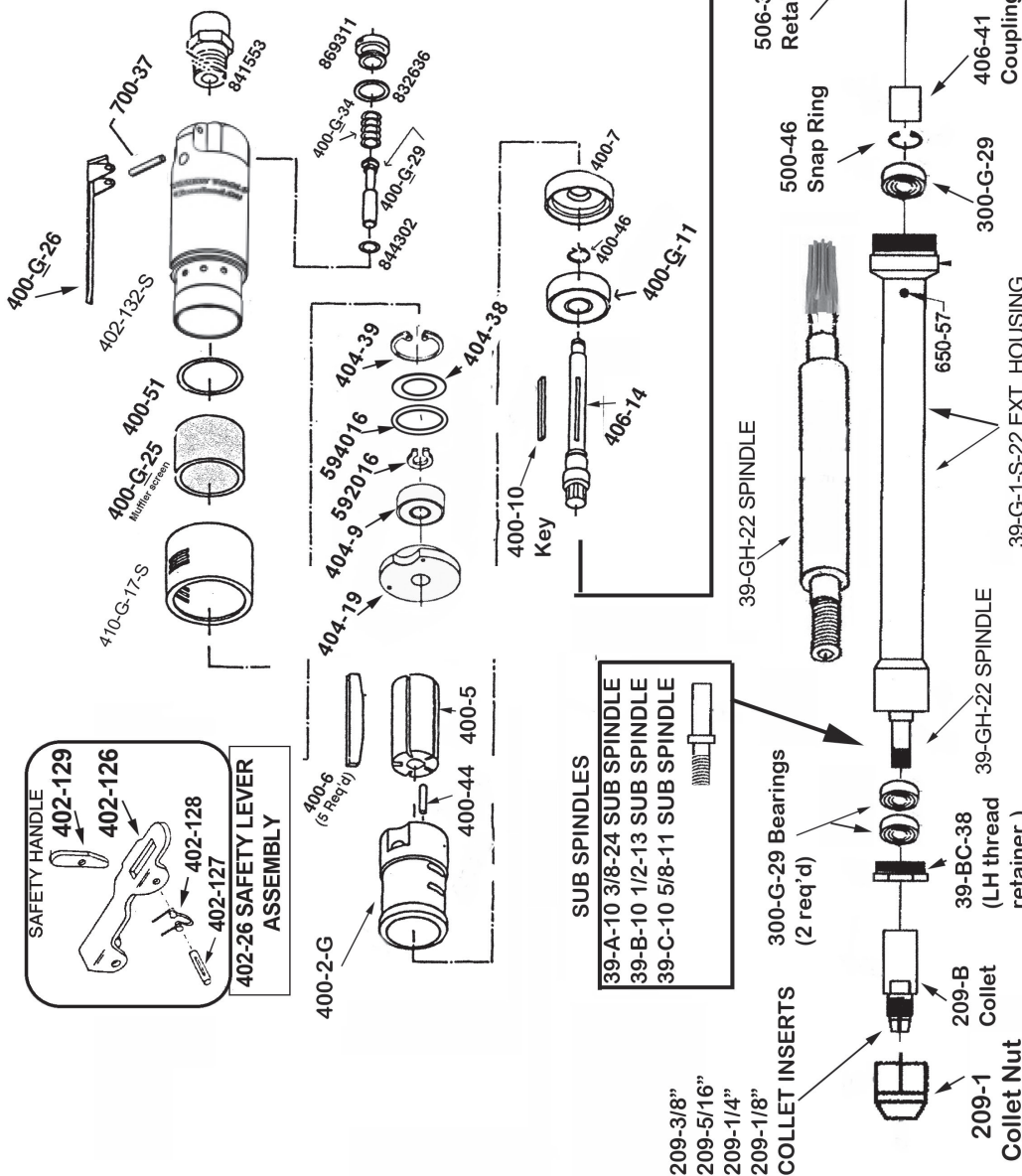


Model Number	Exhaust Direction	Throttle Type	Speed	Power Output	Case Material	Weight		Length	Diameter Front Housing	Air Consumption	Wheel Capacity
							Steel				
3922AGHLS	Side (Side is Standard)	(L) Lever or (K) Safety Lever	15000 to 22000 R.P.M. (18000RPM is Standard)	0.9 H.P. 675 W	Steel				1.120" 2.5cm	25cfm 11.8 L/S	Burrs/Mounted Stones of shank size 1/4 Inch, 3/8 Inch (with appropriate collet). Any Type 16, 17, 17R, 18 or 18R Cone Wheels w/ 3/8-24 or 5/8-11 or 1/2-13 Mounting.

THE HENRY TOOL CO., MANUFACTURED BY HENRY TOOLS
498 SO. BELVOIR BLVD., SOUTH EUCLID, OH 44121 U.S.A.
PH: (216) 291-1011 OR (800) 826-5257 • FAX: (216) 291-5949 OR (800) 303-2800
EMAIL: DAVIDDH@MSN.COM • WEBSITE: WWW.HENRYTOOLS.COM

MODELS 3922 AGHLS

Model 3922AGHLS SUPER EXTENDED 22" long die grinder.



HENRY TOOLS, INC. Ph: (216) 291-1011 or (800) 826-5257

MODELS 3922 AGHLS



Model 3922AGHLS SUPER EXTENDED 27" long die grinder.

PART NO.	DESCRIPTION
592016	SNAP RING
832636	GASKET
841553	SCREENED BUSHING
844032	O-RING
869311	CAP SCREW
209-1	COLLET NUT
209-1/4	1/4" INSERT
209-1/8	1/8" INSERT
209-3/8	3/8" INSERT
209-5/16"	5/16" INSERT
209-B	COLLET BODY
300-G-29	BEARING
594016	RING SPACER
404-38	BEARING COVER
39-A-10	3/8-24 SUB SPINDLE
39-B-10	1/2-13 SUB SPINDLE
39-BC-38	RETAINER (LEFT HAND THREAD)
39-C-10	5/8-11 SUB SPINDLE
39-G-1-S-22	EXTENDED HOUSING
39-GH-22	SPINDLE
400-10	KEY
400-2G	CYLINDER
404-19	REAR ENDPLATE
404-39	SNAP RING
410-G-17-S	STEEL SIDE EXHAUST SLEEVE
400-44	ROLL PIN
400-46	SNAP RING
400-5	ROTOR
400-51	O-RING
400-6	BLADE (5 REQ.)
400-7	FRONT ENDPLATE
404-9	REAR MOTOR BEARING
400-G-11	FRONT BEARING
400-G-26	THROTTLE LEVER
400-G-29	THROTTLE VALVE-INCLUDES 844302
400-G-34	SPRING
400-G-42	3/8-24 FLANGE (2"-3" WHEELS)
400-G-47	3/8-24 JAM NUT
402-126	SAFETY LEVER
402-127	SAFETY LEVER PIN
402-128	LOCKOUT LEVER

PART NO.	DESCRIPTION
402-129	SAFETY LEVER SPRING
402-132	ALUMINUM CASE (SPECIFY SPEED)
402-132-S	STEEL CASE (SPECIFY SPEED)
402-134	MUFFLER
406-14	MOTOR SPINDLE
406-41	COUPLING
500-46	SNAP RING
506-39	HOUSING RETAINER
650-57	
REPAIR KIT	
5000-3922AGH	REPAIR KIT INCLUDES: all bearings and blades and snap rings.

HENRY TOOLS, INC. Ph: (216) 291-1011 or (800) 826-5257