

# Henrytools

Industrial Tools at Work

**MODELS**  
**44 RA**  
**44 RAZ**  
**44 RAC**

## General Safety and Maintenance Manual

Original Style  
Tools



Original Style  
Tools Pre-Year 2009



Model 44RAC angle grinder shown with built-in 1/4" collet for use with carbide burs or mounted points.

Original Style  
Tools Pre-Year 2009



Model 44RA angle grinder shown with 4" guard.



### 44RA SERIES PNEUMATIC ANGLE GRINDERS

Model Number	Exhaust Direction	Throttle Type	Speed	Power Output	Case Material	Weight		Length	Diameter	Air Consumption	Spindle Thread
						Aluminum	Steel				
44RA	Side	(L) Lever or (K) Safety Lever	9000 to 11000 R.P.M. (11000 is Standard)	0.9 H.P. (675 W)	Steel or Aluminum	2 1/2 lbs 1.1kg	3.5 Lbs (1.6 Kg)	8 5/16"- 211mm	1.6 Inches (41 mm)	25 CFM (11.8 L/S)	3/8-24 x 0.98 Inch
44RAZ											5/8-11 x 0.98 Inch
44RAK											3/8-24 x 0.98 Inch
44RAC											1/4 Inch Built-In Collet

**THE HENRY TOOL CO., MANUFACTURED BY HENRY TOOLS**

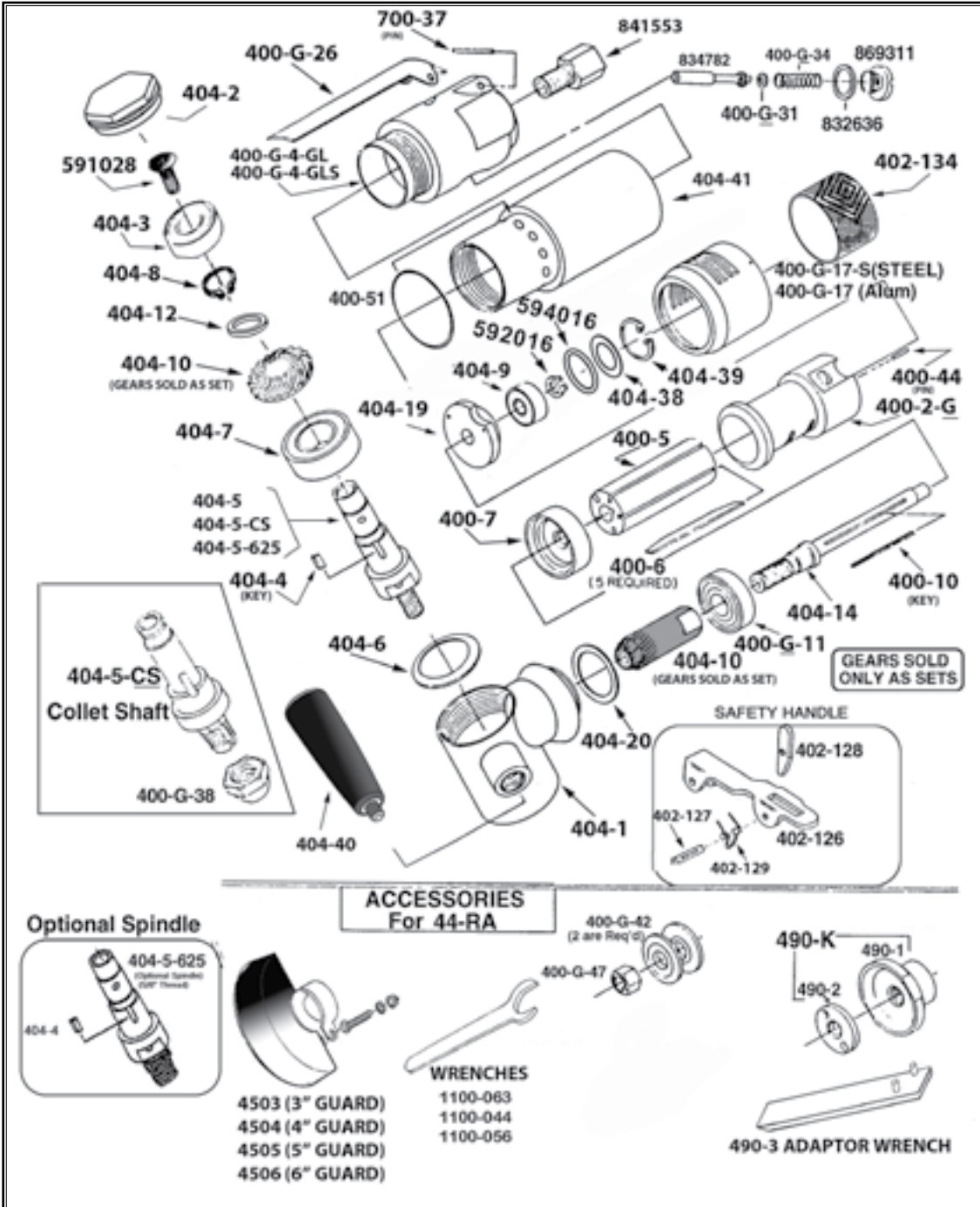
**498 SO. BELVOIR BLVD., SOUTH EUCLID, OH 44121 U.S.A.**

**PH: (216) 291-1011 OR (800) 826-5257 • FAX: (216) 291-5949 OR (800) 303-2800**

**EMAIL: DAVIDH@MSN.COM • WEBSITE: WWW.HENRYTOOLS.COM**

**MODELS**  
**44 RA**  
**44 RAZ**  
**44 RAC**

Original Style Tool



HENRY TOOLS, INC. Ph: (216) 291-1011 or (800) 826-5257



Original Style  
Tools Pre-Year  
2009

**MODELS**  
**44 RA**  
**44 RAZ**  
**44 RAC**

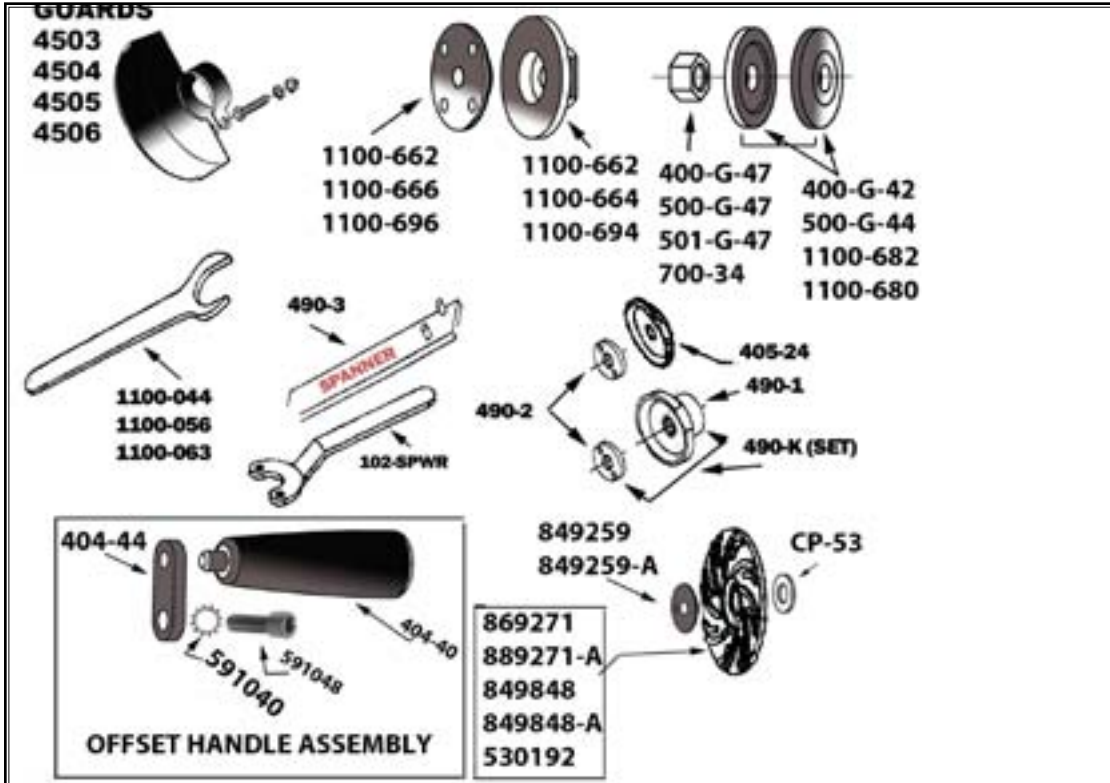
Part No	Description
400-G-11	FRONT BEARING
400-G-17	Alum Side Exhaust Sleeve
400-G-17-S	Steel Side Exhaust Sleeve
400-G-4-GL	Aluminum Backhead
400-G-4-GLS	Steel Backhead
400-G-25	MUFFLER
400-G-26	THROTTLE LEVER
400-G-34	SPRING
400-G-38	COLLET NUT
400-G-42	3/8 I.D. FLANGE (2"-3" WHEELS)
400-G-47	3/8-24 JAM NUT
400-10	KEY
400-44	ROLL PIN
400-2G	CYLINDER WITH PIN INSTALLED
400-5	ROTOR
400-6	BLADE (5 are REQ.)
400-7	FRONT ENDPLATE
400-51	O-RING
402-126	SAFETY LEVER
402-127	SAFETY LEVER PIN
402-128	LOCKOUT LEVER
402-129	SAFETY LEVER SPRING
404-1	Case
400-G-17	Exhaust (aluminum)
400-G-17-S	Exhaust (steel)
402-134	MUFFLER
404-1	ANGLE HEAD
404-2	BEARING CAP
404-3	UPPER OUTPUT SPINDLE BEARING
404-4	KEY
404-5	3/8-24 X .980 OUTPUT SPINDLE
404-5-CS	COLLET OUTPUT SPINDLE
404-5-625	5/8-11 X .980 OUTPUT SPINDLE
404-6	Wavy Washer (Note:2 are req'd)
404-7	LOWER OUTPUT SPINDLE BEARING
404-8	SNAP RING
404-9	REAR MOTOR BEARING
404-10	GEAR SET (sold only as set)
404-12	SPACER RING
404-14	SPINDLE
404-19	REAR ENDPLATE
404-20	MOTOR SPACER
404-38	BEARING COVER
404-39	SNAP RING
404-40	DEAD HANDLE
404-41	MOTOR CASE
404-44	Offset Bracket
500-G-44	3/8 I.D. FLANGE (4"-5" WHEELS)

Part No	Description
500-G-47	1/2-13 JAM NUT
501-42A	1/2" I.D. FLANGE
700-34	5/8-11 JAM NUT
700-37	THROTTLE LEVER PIN
1100-680	5/8 I.D. FLANGE
1100-682	"(6" OR SMALLER WHEELS) 3/8 I.D. FLANGE (5"-6" WHEELS)"
591028	SCREW
591040	Star Washer for Bracket
591048	SCREW
591106	SET SCREW (SPECIFY SPEED)
592016	SNAP RING
594016	O-RING
832636	GASKET
841552	3/8 NPT TO 3/8 NPT BUSHING
841553	3/8 NPT TO 1/4 NPT BUSHING
844302	O-RING
869311	THROTTLE VALVE CAP
834782	THROTTLE VALVE-INCLUDES 844302
<b>REPAIR KITS</b>	
510120	REPAIR KIT INCLUDES ALL BEARINGS, ROTOR BLADES AND SPACERS with Gear Set
510121	REPAIR KIT WITHOUT GEARS
<b>ASSEMBLIES</b>	
402-26	Safety Lever Assembly
<b>ACCESSORIES</b>	
CP-53	WASHER
300-16	1/8" COLLET ADAPTER
300-16-3/32	1/4" TO 3/32" COLLET ADAPTER
400-78	3/8-24 TO 5/8-11 ADAPTER
405-24	BACKING PLATE FOR 490-KR
490-K	"3/8-24 X TYPE 27 ADAPTER ASSY. .980"
490-KR	"3/8-24 X TYPE 27 ADAPTER ASSY. .580"
490-1	BACKING PLATE FOR 490-K
490-2	NUT FOR 490-K & 490-KR
1100-660	3/8-24 TO 5/8 I.D. TYPE 27 ADAPTER ASSY.
1100-661	3/8-24 TO 5/8 I.D. BACKING PLATE
1100-662	3/8-24 TO 5/8 I.D. ADAPTER NUT
1100-664	3/8-24 TO 7/8 I.D. BACKING PLATE
1100-666	3/8-24 TO 7/8 I.D. ADAPTER NUT
1100-668	3/8-24 TO 7/8 I.D. TYPE 27 ADAPTER ASSY.
1100-680	5/8" Adaptor for Type 1 wheels
1100-692	5/8-11 TO 7/8 I.D. TYPE 27 ADAPTER ASSY.
1100-694	5/8-11 TO 7/8 I.D. BACKING PLATE
1100-696	5/8-11 TO 7/8 I.D. ADAPTER NUT
849259	5/8-11 SANDING PAD NUT
849259-A	3/8-24 SANDING PAD NUT

HENRY TOOLS, INC. PH: (216) 291-1011 or (800) 826-5257

**MODELS**  
**44 RA**  
**44 RAZ**  
**44 RAC**

Original Style  
 Tools Pre-Year  
 2009



Part No	Description
889271	5/8-11 4" SANDING PAD (MAX 12000 RPM)
889271-A	3/8-24 4" SANDING PAD (MAX 12000 RPM)
849848	5/8-11 5" SANDING PAD (MAX 10000 RPM)
849848-A	3/8-24 5" SANDING PAD (MAX 10000 RPM)
<b>GUARDS</b>	
4503	3" TYPE 27 GUARD
4504	4" TYPE 27 GUARD
4505	5" TYPE 27 GUARD
4506	6" GUARD
<b>TOOLS/WRENCHES</b>	
490-3	PIN SPANNER
102-SPWR	WRENCH FOR SANDING PAD NUT
1100-044	7/16" WRENCH
1100-056	9/16" WRENCH
1100-063	5/8" WRENCH
1100-075	3/4" WRENCH
1100-094	15/16" WRENCH

HENRY TOOLS, INC. PH: (216) 291-1011 or (800) 826-5257